



EPLO-IRIDE International Conference
VIRIDIS2025 Vilnius Regulatory Delivery International Symposium
Major Public Risks: Achieving Effective Regulatory Supervision
Vilnius 11-12 February 2025

From Reactive to Proactive

Minna Päivinen

Director of Research and Development
Finnish Safety and Chemicals Agency (Tukes)

minna.paivinen@tukes.fi

Finnish Safety and Chemicals Agency Tukes

We are a national safety authority

We protect people, property and the environment from safety risks

We monitor that chemicals, products, services and production systems comply with their statutory requirements

We enforce legislation related to the industries we oversee

We develop regulation, cooperation between authorities and operating models. We also carry out research and development projects



tukes

Future and how to get there



Active future forecasting

- Risks
- Opportunities



Strategy

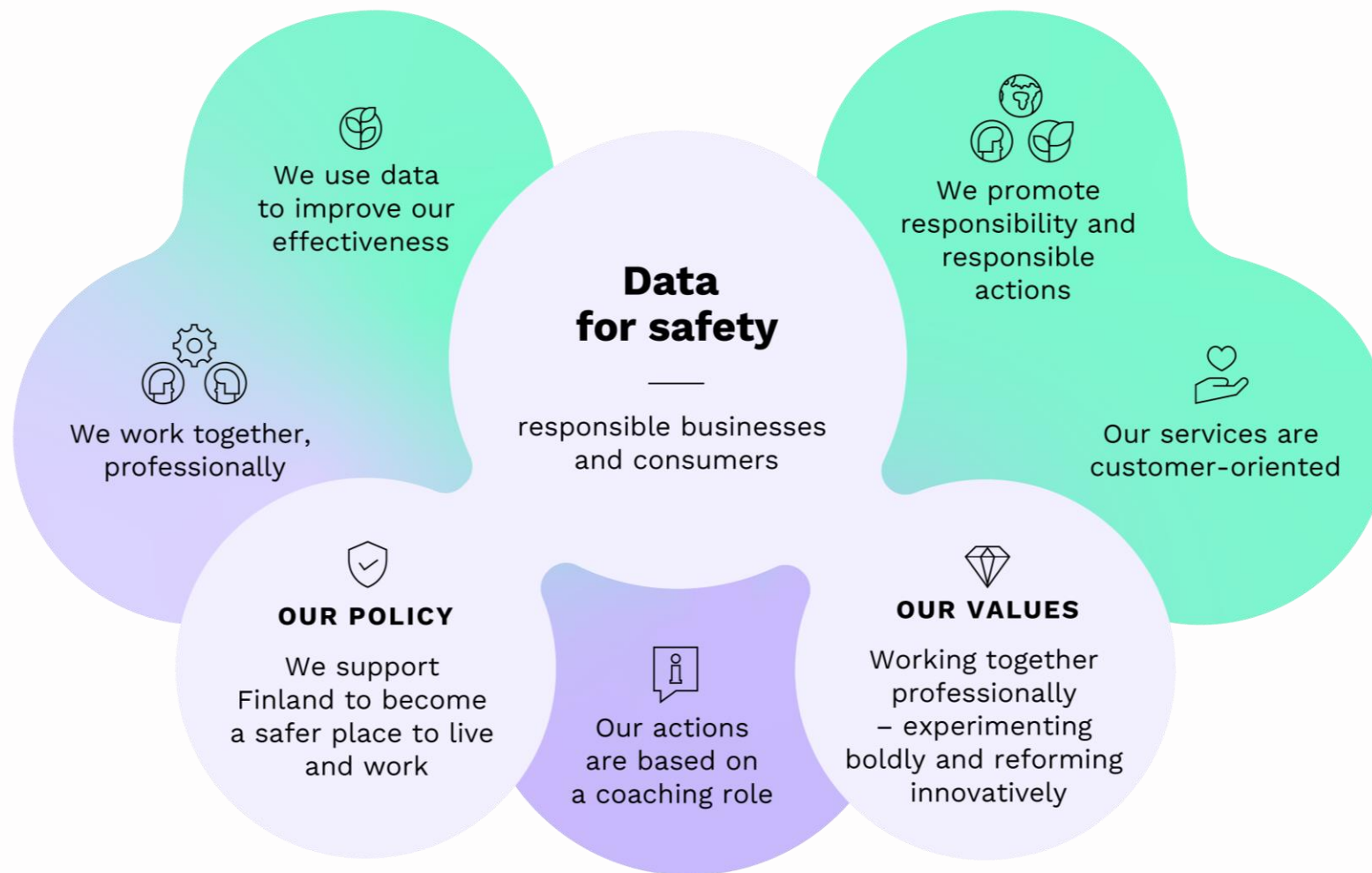
- Dynamic strategy process



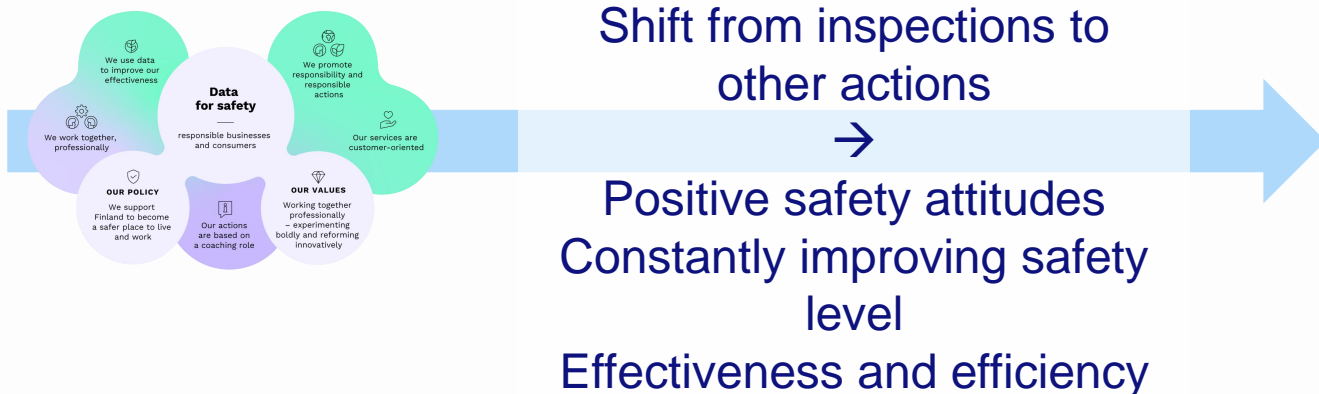
Case examples of:

- Data driven actions
- Co-operative regulation

Strategy



From reactive to proactive



Data

- Internal use → risk-based actions, development and targeting of actions, identification of deviation
- External use → safety culture, risk awareness

Co-operative regulatory delivery*

- Promoting safety positivity
- Building motivation and trust
- Enabling change
- Inquiring, listening and encouraging interaction
- Use of extensive toolbox; information, advice, guidance and, if necessary, stronger means
- Ensuring the ability to intervene

* E.g. Russel, G. and Hodges, C. 2019. Regulatory Delivery

tukes

Example 1

Shared Framework for Effective Regulatory Delivery

fimea

stuk

tukes



Valvira

Sosiaali- ja terveysalan
lupa- ja valvontavirasto

Fimea - Finnish Medicines Agency

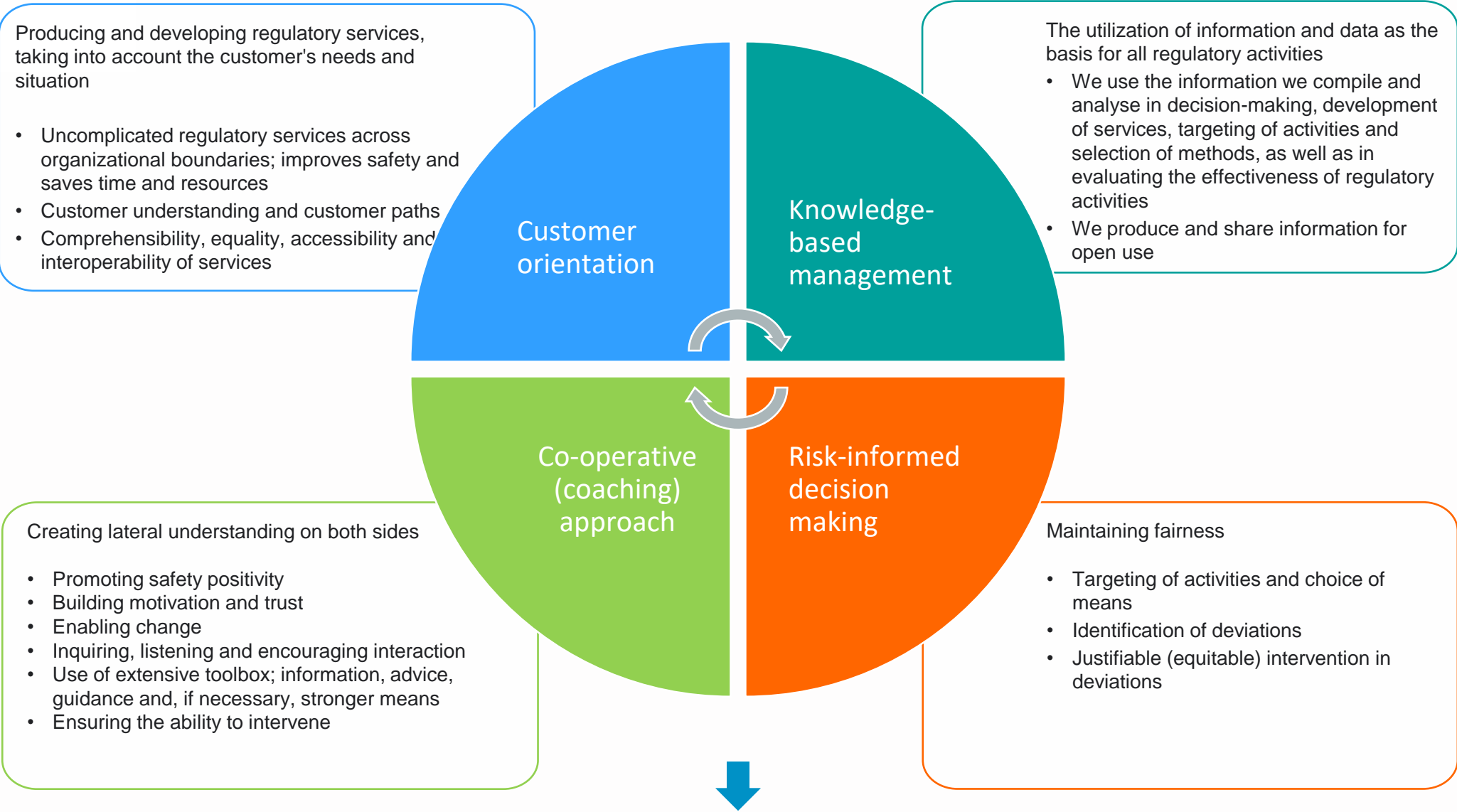
STUK - Radiation and Nuclear Safety Authority

Tukes - Finnish Safety And Chemicals Agency

Valvira - National Supervisory Authority for Welfare and Health

Framework for Effective Regulatory Delivery

Functional and up-to-date legislation



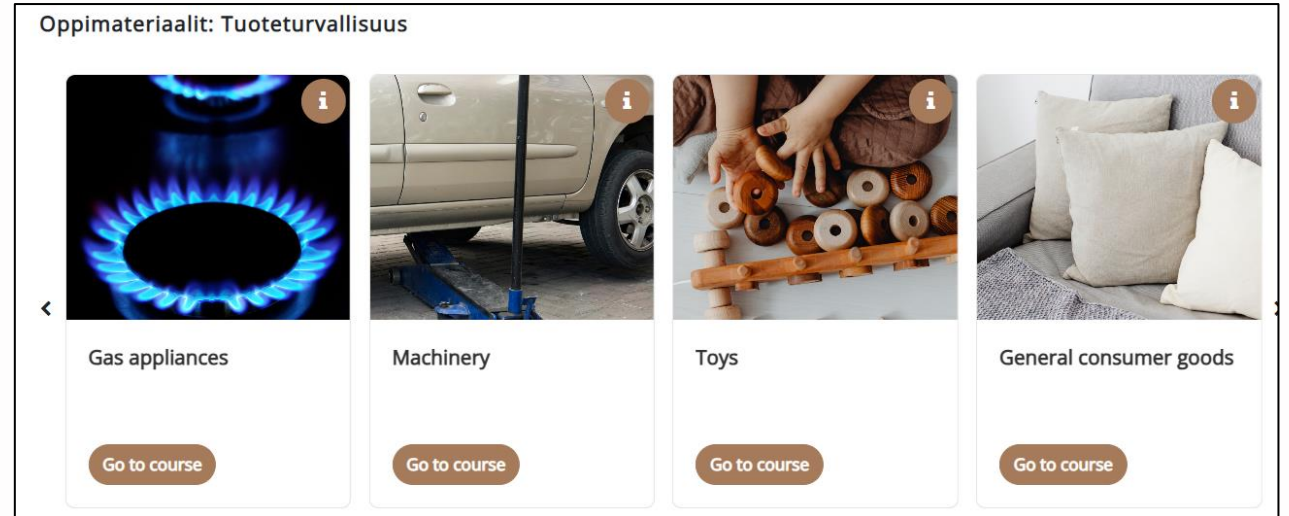
Promotion of positive safety attitudes and a constantly improving safety level
Cost-quality level (effectiveness and efficiency)
Safety as a social value grows
Continuous improvement of trust to the authorities and for the Finnish society

tukes

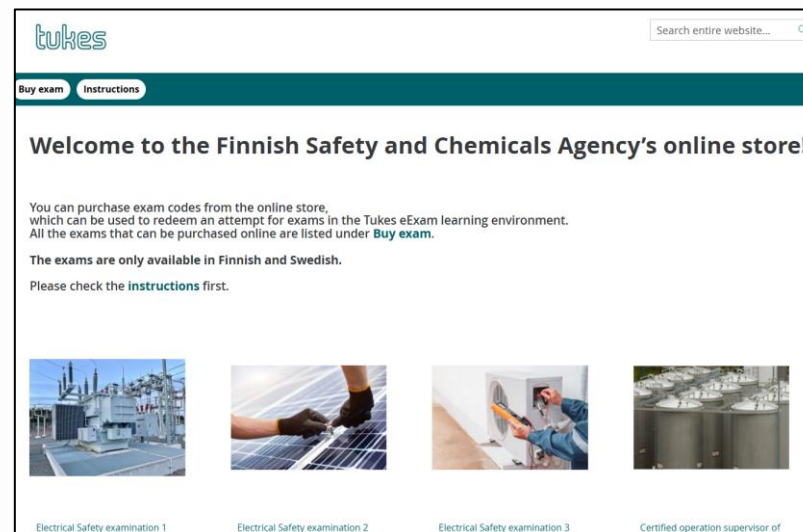
Example 2

Providing guidance

- eLearning environment
 - Currently 14 topics



- 24/7 online exams (mandatory exams) available on Tukes' online store



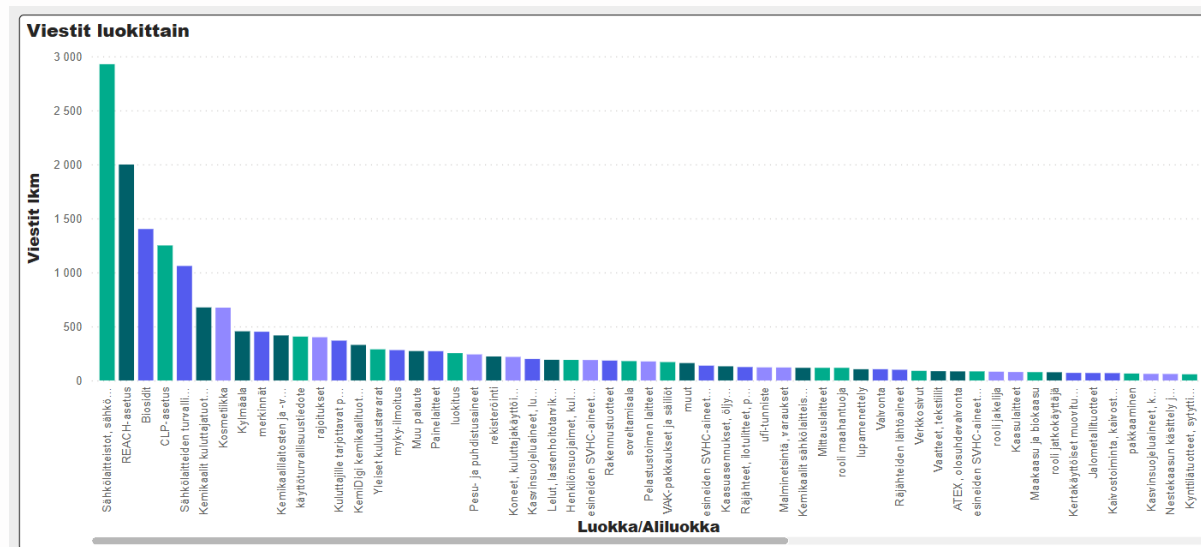
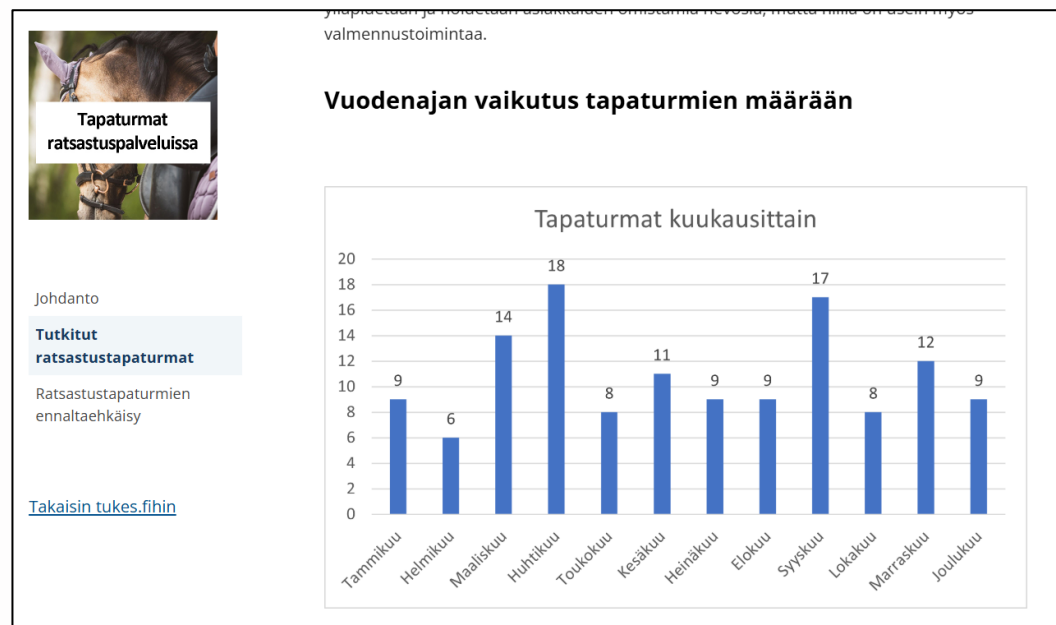
tukes

Example 3

Data for Safety

Data for Safety

- Data analysis and reports
 - e.g. Riding accidents in Finland, Review of Mining Authority on Exploration and Mining Industry in Finland
- PowerBI –analysis
 - e.g. Online information services; analysis of the data; most asked topics → improvement of webpages
- Strong emphasis on more efficient and versatile use of data
 - Risk-based approach
 - Alternative approaches to inspections
 - Theme-based inspections



tukes

Thank You!